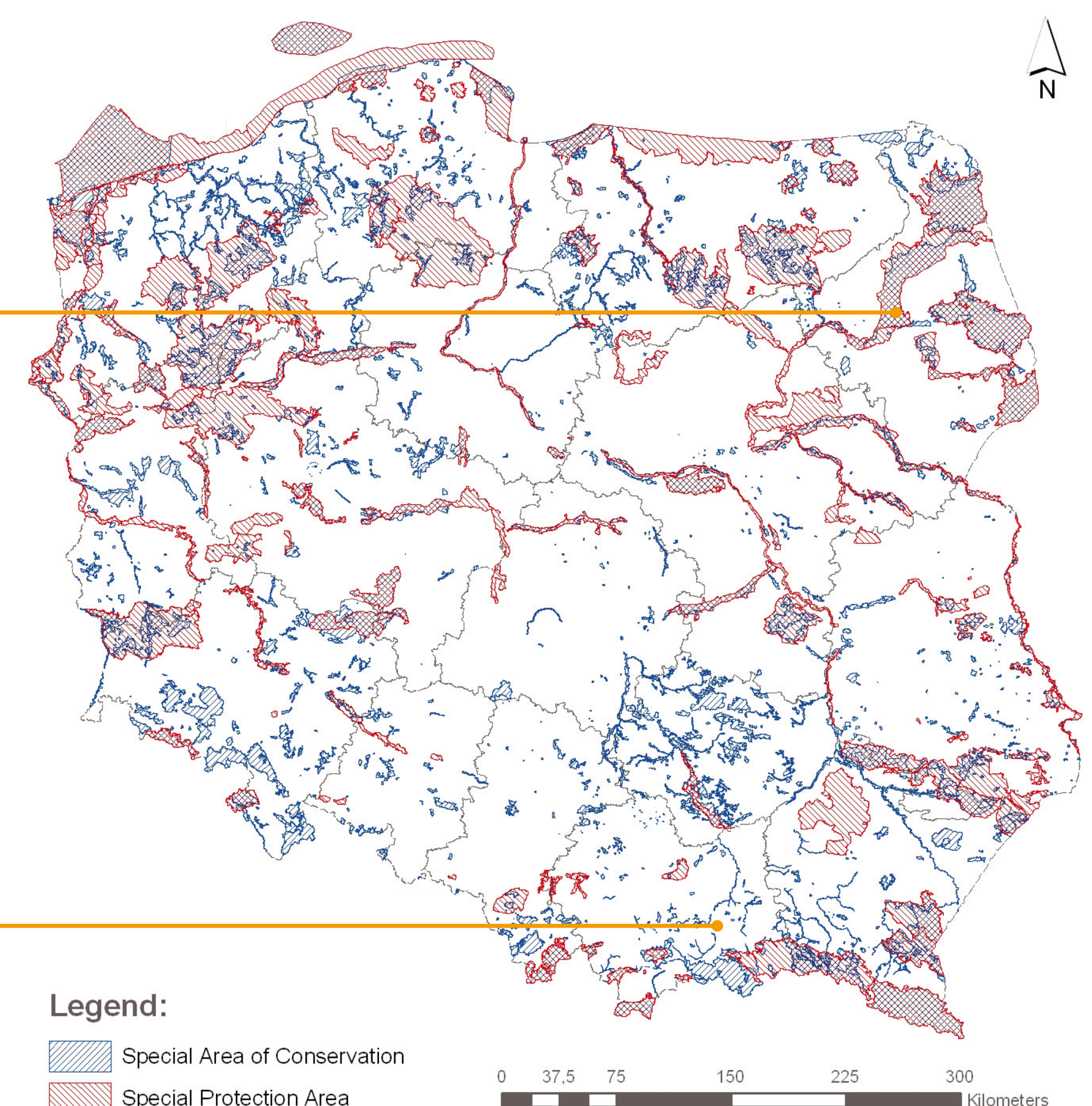


# High Nature Value farmland in Poland

## LOWLAND FARMS - THE BIEBRZA VALLEY



Map: Natura 2000 network in Poland

### Types of HNV areas

- About 40-60% of agricultural land in Poland demonstrates the features of HNV areas.
- Most HNV areas occur in the East and South of the country – in the zone of mountain and mountain forelands, extensive natural river valleys and lakeland regions.
- In these areas, about 19 types of semi-natural habitats forming meadows and pastures are used.
- The most valuable HNV areas can be found within the Natura 2000 network, which represents 20% of the surface area of the country.

### Characteristics of the agricultural sector in Poland

- In Poland, there are 2.5 million farms, with the area of 70% of them exceeding 1 ha. The average surface area of a farm is 7,2 ha.
- 2 million people work in agriculture, but farming is the main livelihood for 27% of farms only.
- More than half the farms are extensive with the economic size of up to 2 ESU. There are only 245,300 profitable farms exceeding 8 ESU throughout the country.
- About 18,000 organic farms are in operation. Their average size exceeds 30 ha of farmland

## MOUNTAIN FARMS - THE CARPATHIANS



### Types of HNV farming systems

- HNV farms are small, family-run with their production managed in an extensive and traditional manner.
- They are characterised by a high share of permanent grassland in their farmland which is equal to or higher than 20% and a small number of herbivorous animals between 0.1 and 10 LU/ha of farmland.
- HNV farms have low overall costs and reach small revenues. Subsidies under the Common Agricultural Policy, with their share in their incomes per 1 ha of farmland amounting to about 50%.

### Perspectives for the future

- The need of support for herd grazing and the construction of shepherds' installations
- A change in the legal protection regimes for such species as e.g. wolf, beaver and cormorant, which reproduce to an excessive extent, causing damage to livestock or hampering the management in HNV areas
- Develop entrepreneurship centres in HNV areas, particularly on Natura 2000 sites
- The needs for nature advisory

„High Nature Value Farmland in Europe“  
Conference: 14–18 June 2010, Vilm, Germany